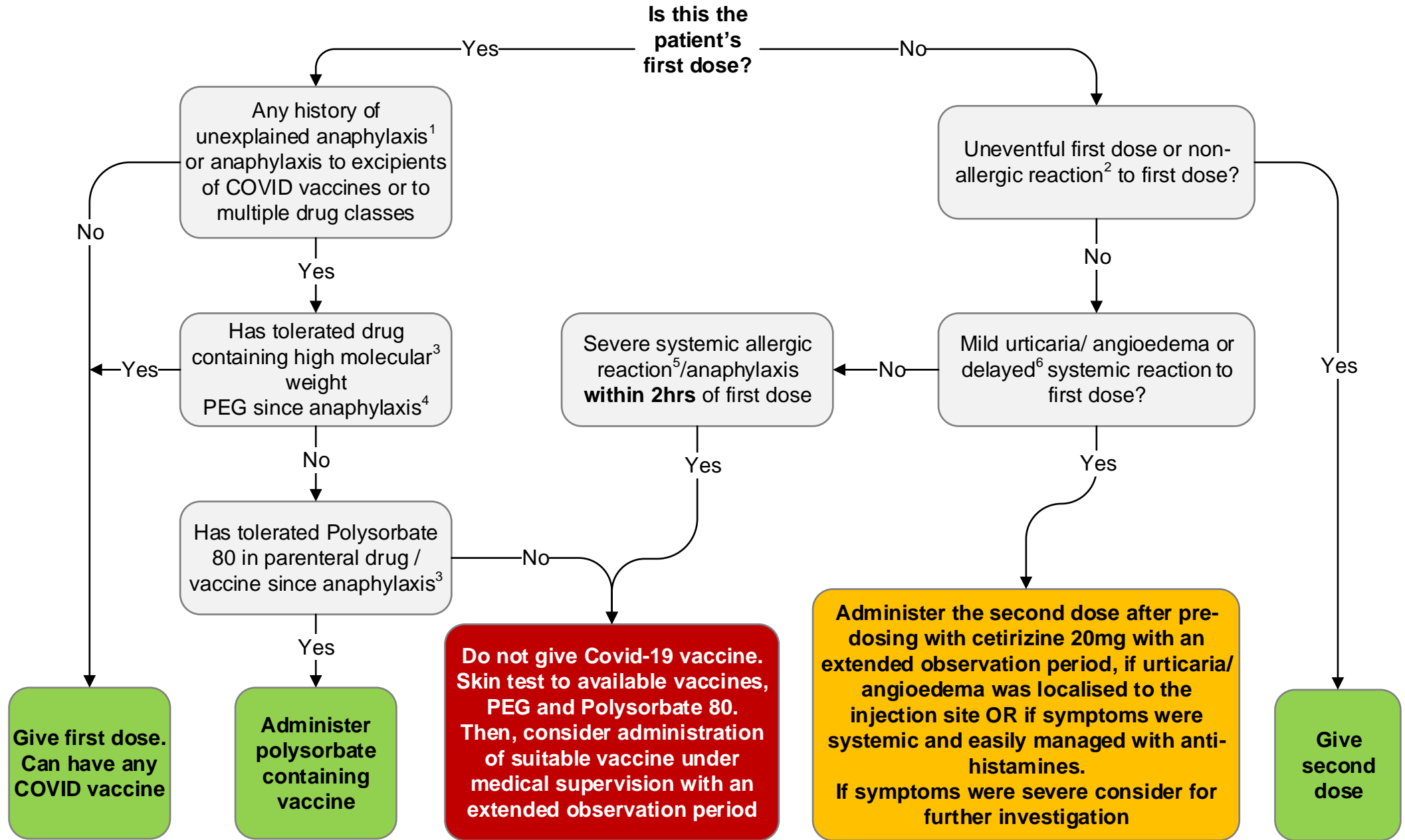


Algorithm for allergy specialists for patients with a history of anaphylaxis prior to COVID-19 vaccination



1. Only anaphylaxis occurring after PEG containing medication 2. Vasovagal episodes, non-urticarial skin reaction or non-specific symptoms. 3. Molecular weight ≥ 2000 4. Refer to SPC section 6.1 for excipient contents of current or recent drugs. 5. Including immediate onset anaphylaxis. 6. Delayed is >2hrs post-dose. PEG – Polyethylene glycol
S Nasser, T Dymond